

# Introduction of Waste Management Strategies in Maseru City Council - Lessons learnt from the JICA training

Presentation by: Motseki Khuto

Venue: JICA, YIC

DATE: 25<sup>th</sup> August 2019

# INTRODUCTION

- Lesotho like all developing countries is experiencing a huge influx of people in the Capital City, Maseru as a result of the economic, employment and social opportunities that the city is perceived to offer. This in turns gives rise to a number of challenges in as far as city cleanliness is concerned.
- In a nutshell the challenges that Maseru City Council is confronted with is include amongst others the following:

# Introduction Cont'd

- Unwillingness to pay for waste services
- Inadequate refuse collection fleet
- Frequent breakdowns of refuse collection vehicles
- Delayed repairs of refuse collection fleet
- Illegal dumping into dongas and open spaces
- Spillage along the roads
- No bye-laws
- Shortage of staff

# Introduction Cont'd

- Vandalism of refuse bins
- Theft of anti-littering boards
- Extremely inadequate budget for SWM

# Waste management strategies in place

# 1. Held the Business & International Communities Consultation /Sensitization Forums

e.g. 1.UNICEF; 2.Aon Insurance ;  
3. Maluti Rotary; Metropolitan  
Insurance, Mobile Network co.



# Business & international Communities forums Cont'd



## 2. Established an outreach program team



For community sensitization & mobilization



### 3. Developed waste management brochures and banners for sensitization



# Brochures & Banners Cont'd

## HO PATALLOA HOA LITŠEBELLETSO TSA LEKHOTLA LA MOTSE-MOHOLO MASERU - MCC

Ke boikarabello ba Mosotho e mong le emong ea lulang ka hare ho setsiketsi sa Lekhotla la Motse Moholo Maseru (MCC) ho patalla litšebelletso tse fanoang ke Lekhotla (municipal service fees). Chelete ena ke eona e thusang Lekhotla ho etsa meralo ea ntlafatso ka hare ho metse le metsana.

### Tefo

Tefo ke M170.00 moo batho ba sa hlekeng bohloaso ka hara metse ea bona (community contracting), ompa moo e leng teng, tefiso ke M100.00 mme li patalloa khoeli le khoeli.

Ho se lefe lichelete tšena ho tima moahi monyetla oa ho fumana tšebelletso ea mofuta ofeng kapa ofeng ho tsoa MCC.

### HO KA PATALLOA LIBAKENG TSE LATELANG

1. Khubetsoana Clinic
2. Thamae Clinic
3. Memorial Hall
4. Maseru Market
5. Head Quarters - Moonstar Building next to main Traffic Circle



## HO LEFELLA BANKENG

Standard Lesotho Bank - 9080004003272

Acc. name - 'Maseru City Council rate fund'

FNB ACC - 6255 9579 811

Acc. name - 'Maseru City Council'

MPESA - 5011 5684

Batho ba sa khoneng ho patalla eba e ka ba ka mabaka afeng kapa afeng, ba lokela ho etsa bopaki bo joalo ho Morena oa sebaka mme ke bona bopaki bo tla fanoa Lekhotleng la Motse Moholo. Mohlala; batho ba sa sebetseng, ba nang le bokooa bo ba sitisang ho sebetsa kapa ele batho ba baholo joalo joalo.

### MELAO

1. Local Government Act of 1997 as amended
2. Maseru City Council Resolution H0.002/2014
3. Valuation and Rating Act of 1980

## TOKOMANE EA TUMELLO EA HO AHA KA HARA MOTSE MOHOLO MASERU

Motho e mong le emong ea lakatsang ho aha kapa ho ntlafatsa moaho oa hae ka hare ho meeli ea Lekhotla la Motse Moholo Maseru (MCC), o tokela hore a be a na le tumello ea ho aha e fanoang ke MCC. Tokomane ena e fuoa motho ea batlang ho aha ntle kapa ho a ha lerako le teratelang sebaka sa hae, 'me ke ea molao.

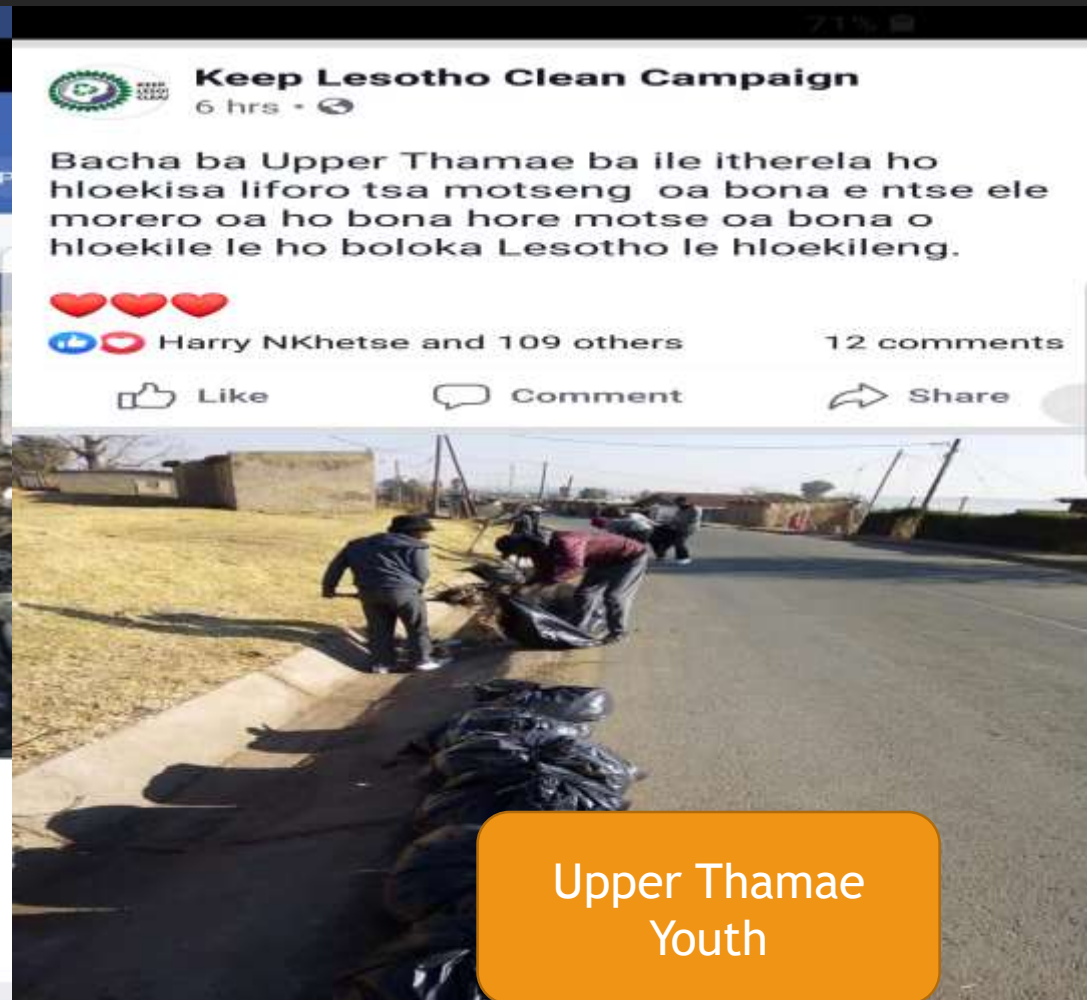
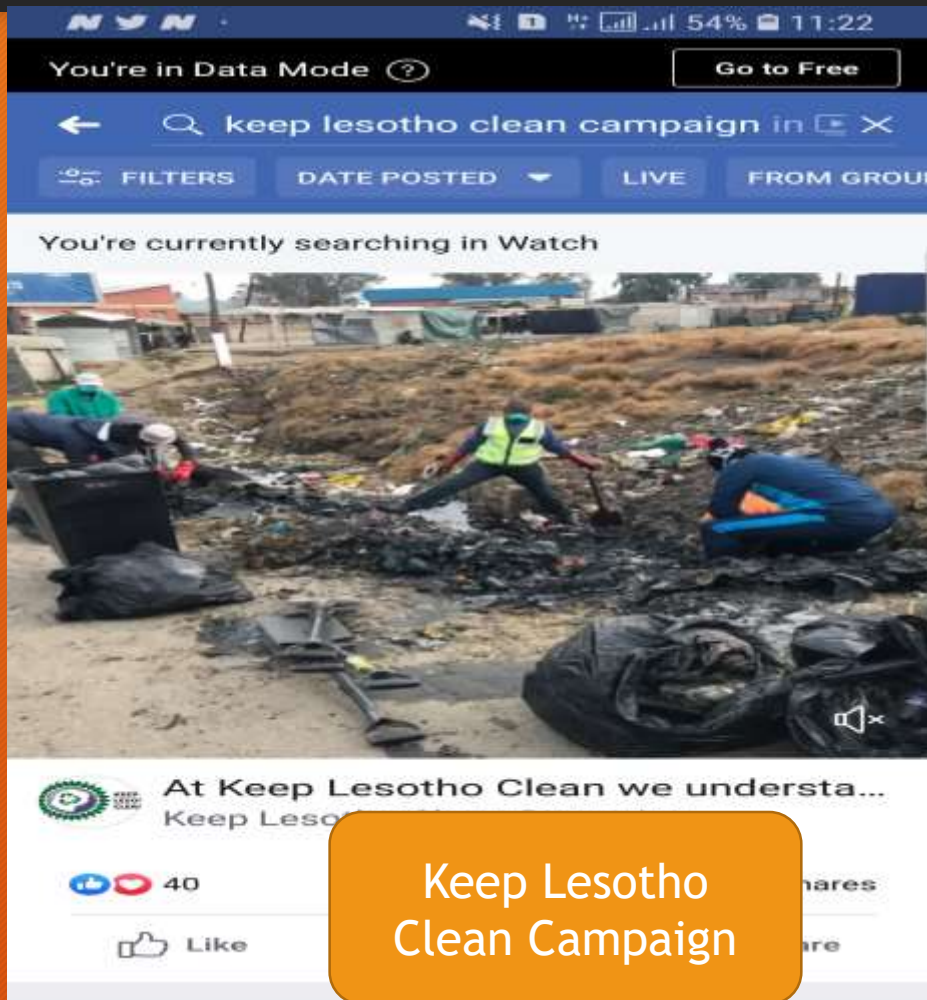
Sebakeng sa litlhakisetsa tse ling, batho batho ba ka etola hiofisi tsa MCC ka Lefapheng la Meralo le Ntlafatso (Planning and Development).

### MELAO

1. Town and Country Planning Act 1980
2. Development Control Code 1989
3. Building Control Act 1999
4. Building Control Regulations 1995

**Tseba ka tse ling tsa Litšebelletso tse fanoang ke MCC**

# 4. Managed to form a few voluntary waste management groups



## 5. Introduced hot-spots patrolling team



# Waste management strategies put in place

## Cont'd

5. Introduce collection of industrial waste by private contractors
6. Council's legal Team currently working with the Ministry of Local Government to facilitate enactment of the bye-laws
7. Working very closely with the national police service for establishment of Council's police service
8. A fulltime mechanic attached to the department responsible for waste management for :
  - preventive maintenance and prompt response
  - monitor breakdowns and their causes per truck and effect corrective measures thereof

# Constraints

- Financial constraints - which still disable us to
  - Attend to vehicle repairs on time
  - Increase refuse collection staff
  - Increase number of refuse collection fleet
- Government bureaucracy
  - Delayed enactment of bye-laws
  - Delayed provision of enabling environment
- Uncooperative Community
  - Unwillingness to pay for waste management services
  - Headstrong community
  - (in other words we are trying but progress too slow)

**ARIGATO GOZAIMASHITA!!!!**